

ills@derby.ac.uk



ILLs @ Derby

What comes to mind when thinking about ILLs.....?

- Sources of supply?
- The decline in interlending activity?
- Problems with Systems? SED?

All these are relevant and pertinent but

A certain excitement.....

- Of reader anticipation
- Of the need for speed and efficiency
- To acknowledge that the most obscure of titles are wanted.....usually ...yesterday!!

.....The Black Hand Gang....Kenya 1988

- So, what do we do at Derby.....?

Interlending structure

- Three sites
- Five subsidiary BL accounts
- Site specialists with 'local' autonomy
- Precise transport procedures between sites
- 'The DX' transport system.....

We don't have a large research base

Some colourful requests originate from our Forensics staff and students.....



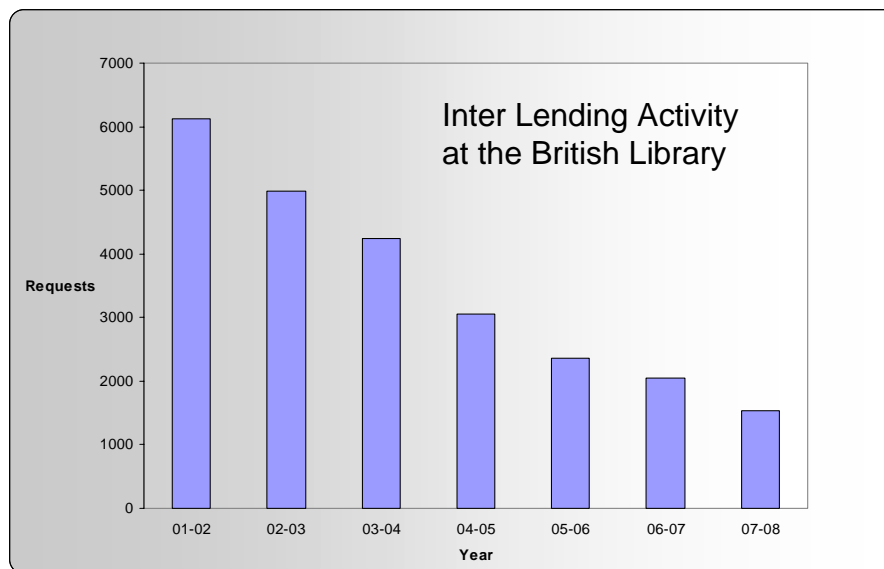
...Forensic Odontology.....Blood Splatter Patterns...

Funding

- ILLs Service funded from the Library Budget
- 'Free' to staff and researchers
- Post grads' receive the first 20 included
- Undergrads', Yr 2 and above, pay £2.00
- No 'charge back' to Faculties

Activity.....

- Derby is not alone in showing a steady decline in ILL activity
- Conversely, ILL activity is broadening
- Secure Electronic Delivery
- Broader searching
- Talis Source
- OCLC Resource Sharing



Numbers..... 2007 - 2008

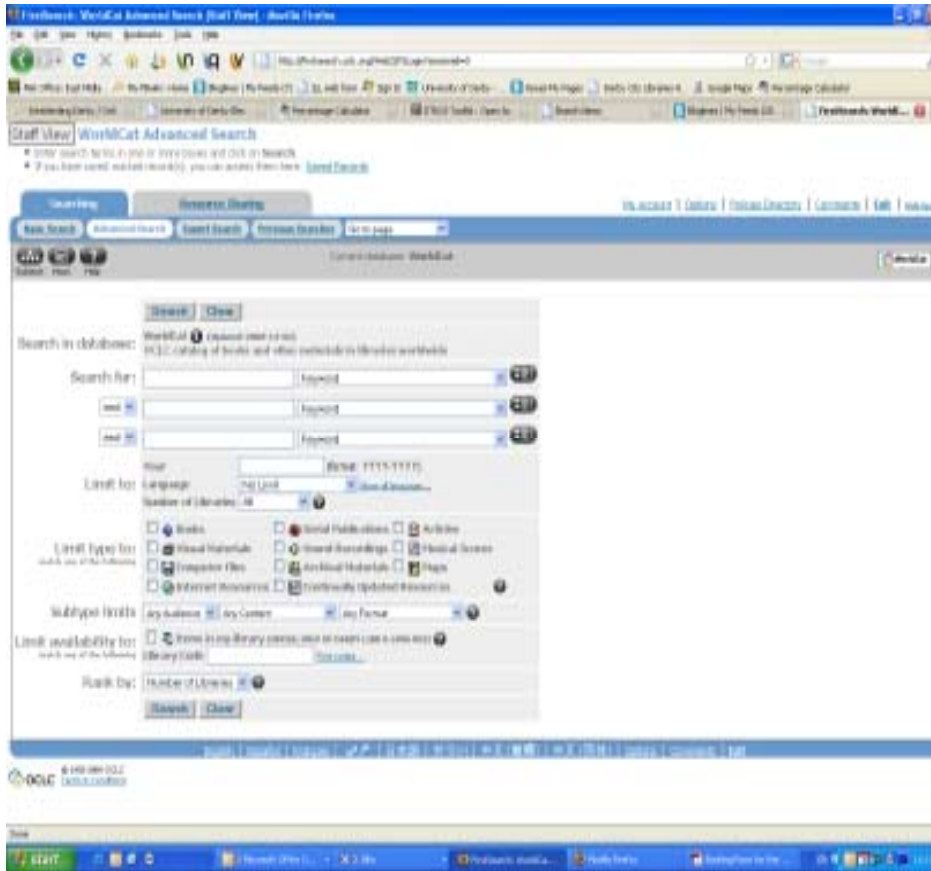
- 671 Monograph requests
- 1007 Serials requests
-of which
- 429 were delivered SED
- 'Systems' average of 7 days to supply
- Books usually in 3 days
- SED often within 24 hours



Derby supplies.....

- LIEM
- UnityUK, particularly within region
- NULJ Nursing Union List of Journals
- Direct
- Recent arrangement with De Ferrers School

OCLC Resource Sharing



- World wide locations
 - Many 'free of charge'
 - Cost effective
 - Swift service
 - Satisfies unlikely requests.....
-Earprints?

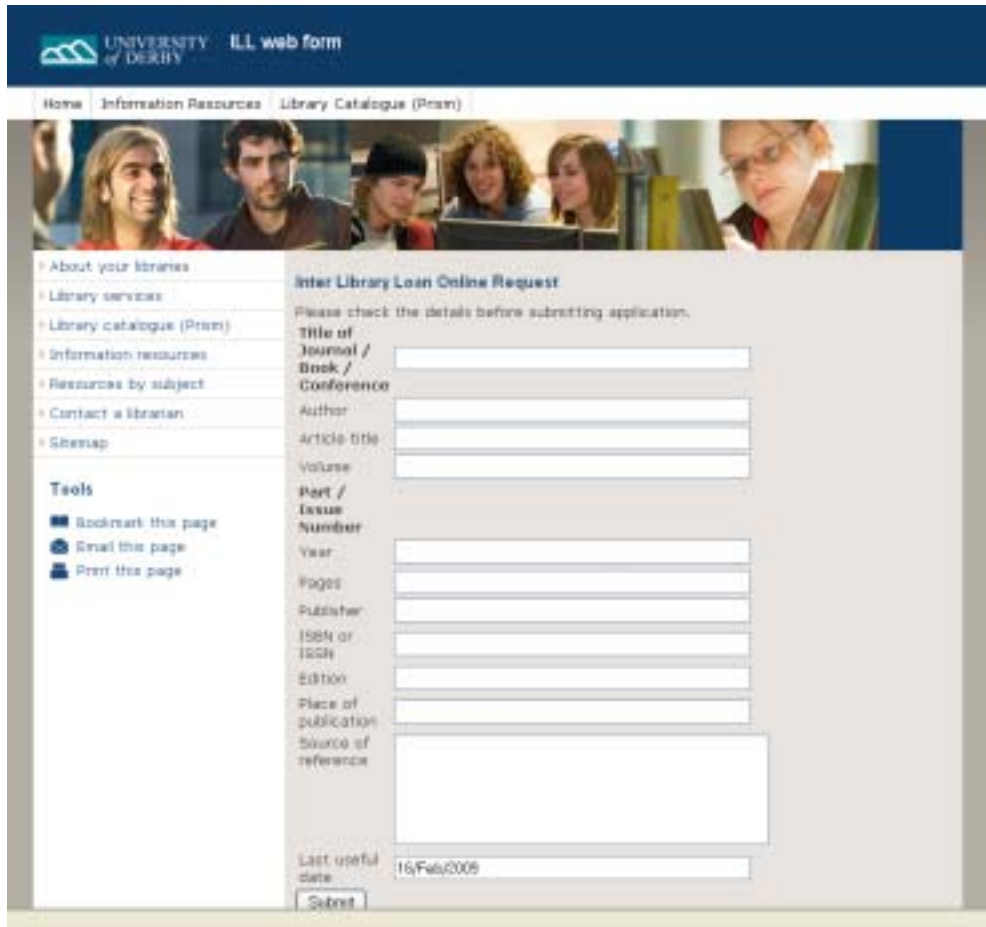
SED...Secure Electronic Delivery

- Introduced to Staff in June 2005
- Immediately impressive, even to new users
- Offered to staff and researchers
- Not without problems re ADE
- Offered as a 'beta' test to students, off campus
- Requesters must 'register' their intent for SED
- Service will be expanded to include students 'on campus'

Online ILL requesting.....

- An ongoing project now nearing completion
- [Online request form prepared](#)
- Strong and robust response to the requirements of the e-signature
- Beta Test Introduction in Jan 08 for staff
- Credit function in Alto 4.3
- Online requesting and SED on open access PCs scheduled September 2009

Online Requesting



The screenshot shows the 'Inter Library Loan Online Request' web form from the University of Derby. The page has a dark blue header with the university logo and the text 'ILL web form'. Below the header is a navigation bar with links for 'Home', 'Information Resources', and 'Library Catalogue (Print)'. A banner image shows a group of students in a library setting. On the left side, there is a sidebar menu with categories like 'About your libraries', 'Library services', 'Library catalogue (Print)', 'Information resources', 'Resources by subject', 'Contact a librarian', and 'Sberap'. Under the 'Tools' section, there are links for 'Bookmark this page', 'Email this page', and 'Print this page'. The main content area is titled 'Inter Library Loan Online Request' and includes a warning: 'Please check the details before submitting application.' The form fields are: 'Title of Journal / Book / Conference', 'Author', 'Article title', 'Volume', 'Part / Issue Number', 'Year', 'Pages', 'Publisher', 'ISBN or ISSN', 'Edition', 'Place of publication', and 'Source of reference'. At the bottom, there is a 'Last useful date' field with the value '16/Feb/2009' and a 'Submit' button.

UNIVERSITY of DERBY ILL web form

Home Information Resources Library Catalogue (Print)

About your libraries
Library services
Library catalogue (Print)
Information resources
Resources by subject
Contact a librarian
Sberap

Tools
Bookmark this page
Email this page
Print this page

Inter Library Loan Online Request
Please check the details before submitting application.

Title of Journal / Book / Conference
Author
Article title
Volume
Part / Issue Number
Year
Pages
Publisher
ISBN or ISSN
Edition
Place of publication
Source of reference

Last useful date 16/Feb/2009
Submit

Finally.....

Derby looks forward....

- Broadened and expanded service
- Increasingly electronic
- Swift and efficient
- That our requesters remain satisfied users.....

